



# THEY'RE BACK!

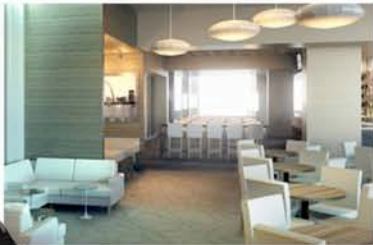
MU & UI touchdown in STL one last time!



2010 State Farm Arch Rivalry



Saturday, Sept. 4  
Edward Jones Dome



## HOSPITALITY PACKAGES

Experience the excitement of the Arch Rivalry in style. VIP packages offering outstanding benefits are currently available. They're a perfect way to entertain clients and friends.

### The Rivals Club

Join **The Rivals Club** to secure some of the best seats in the Edward Jones Dome and enjoy access to the Rams Club with an exclusive pregame meal. All Rivals Club packages include complimentary reserved parking, access to the Rams Club before and during the game, an Arch Rivalry lanyard and ticket holder, and more!

### Tailgate Suites in Baer Plaza

If you're looking to entertain a larger group or really want the best experience the Arch Rivalry has to offer, **Tailgate Suites in Baer Plaza** are now available. With only six available, they're sure to go fast.

To reserve your package, complete the attached form. For more information contact Karli Juenger with the St. Louis Sports Commission at 314/345-5111 or [kjuenger@stlsports.org](mailto:kjuenger@stlsports.org).

[www.statefarmarchrivalry.com](http://www.statefarmarchrivalry.com)



# THEY'RE BACK!

MU & UI touchdown in STL one last time!



**2010 State Farm Arch Rivalry**



**Saturday, Sept. 4**  
Edward Jones Dome

## Hospitality Packages

### RIVALS CLUB 35-Yarder Package (for 8) - \$3,000

- Eight Concourse Level tickets between the 35-yard lines.
- Four parking passes.
- Access to the Rams Club before and during the game.
- A pregame meal in the Rams Club including a buffet and two adult beverages per person for eight people total.
- Eight Arch Rivalry lanyards and ticket holders.
- Listing on message board and in souvenir program.
- Right to purchase up to four additional Concourse Level sideline tickets (by July 23).
- Two tickets to the Arch Rivalry Riverboat Race on Sept. 3.

### RIVALS CLUB 30-Yarder Package (for 4) - \$1,600

- Four Concourse Level tickets between the 30-yard lines.
- Two parking passes.
- Access to the Rams Club before and during the game.
- A pregame meal in the Rams Club including a buffet and two adult beverages per person for four people total.
- Four Arch Rivalry lanyards and ticket holders.
- Listing on message board and in souvenir program.
- Right to purchase up to two additional Concourse Level sideline tickets (by July 23).
- Two tickets to the Arch Rivalry Riverboat Race on Sept. 3.

### RIVALS CLUB Loge Package - \$1,200

- Four Terrace Loge seats in the first four rows of the Terrace Level.
- Two parking passes.
- Access to the Rams Club before and during the game.
- A pregame meal in the Rams Club including a buffet and two adult beverages per person for four people.
- Four Arch Rivalry lanyards and ticket holders.
- Listing on message board and in souvenir program.
- Right to purchase up to four additional Terrace Loge level tickets (by July 23).
- Two tickets to the Arch Rivalry Riverboat Race on Sept. 3.

### TAILGATE SUITES in Baer Plaza - \$9,250

- 20' x 30' private reserved space in Baer Plaza with 20' x 20' hospitality tent. Includes seating for thirty.
- Twenty lower-level tickets between the 35-yard lines.
- Thirty Arch Rivalry lanyards and ticket holders.
- Four parking passes in St. Louis Centre Parking Garage.
- One VIP parking pass in Baer Plaza.
- Recognition in official program and on signage in hospitality venue.
- Special sponsor gift.
- Right to purchase up to ten additional tickets in lower-level (by July 23).
- Catering is available for purchase. America's Center Catering will contact you regarding catering options.
- Four tickets to the Arch Rivalry Riverboat Race on Sept. 3.

**Please return ORDER FORM (on reverse side) by fax 314/621-1391 or mail to:**

St. Louis Sports Commission | Attn: Karli Juenger | 308 N. 21<sup>st</sup> Street – Suite 500 | St. Louis, Missouri 63103

For questions, please call 314/345-5111 or email [kjuenger@stlsports.org](mailto:kjuenger@stlsports.org).

[www.statefarmarchrivalry.com](http://www.statefarmarchrivalry.com)



# THEY'RE BACK!

MO & UI touchdown in STL one last time!



2010 State Farm Arch Rivalry



Saturday, Sept. 4  
Edward Jones Dome

## Hospitality Packages Reservation Form

PLEASE ENSURE ALL INFORMATION IS LEGIBLE, ACCURATE AND COMPLETE!

Name: \_\_\_\_\_

Company: \_\_\_\_\_

Address: \_\_\_\_\_

City: \_\_\_\_\_ State: \_\_\_\_\_ Zip: \_\_\_\_\_

Phone: \_\_\_\_\_ E-mail: \_\_\_\_\_

**Yes! I would like to purchase one or more of the following Rivals Club Packages.**

\_\_\_\_ # of Rivals Club 35-Yarder Packages at \$3,000 per package = Total \$ \_\_\_\_\_

\_\_\_\_ # of Rivals Club 30-Yarder Packages at \$1,600 per package = Total \$ \_\_\_\_\_

\_\_\_\_ # of Rivals Club Loge Packages at \$1,200 per package = Total \$ \_\_\_\_\_

**Yes! I would like to purchase one or more of the Tailgate Suites in Baer Plaza.**

\_\_\_\_ # of Tailgate Suites in Baer Plaza at \$9,250 per package = Total \$ \_\_\_\_\_

**GRAND TOTAL = \$ \_\_\_\_\_**

Check here if you wish to purchase the additional tickets available in your package and a Sports Commission staff member will contact you.

**LOCATION PREFERENCE:**  Mizzou Side  Illinois Side  
(Location cannot be guaranteed)

### FORM OF PAYMENT

Check Enclosed (Payable to the St. Louis Sports Commission)  MasterCard (Preferred card of the Sports Commission)  Visa  American Express

Name on Card: \_\_\_\_\_

Billing Address: \_\_\_\_\_

City: \_\_\_\_\_ State: \_\_\_\_\_ Zip: \_\_\_\_\_

Credit Card #: \_\_\_\_\_

Expiration Date: \_\_\_\_\_ \*\*Card Security Code: \_\_\_\_\_

\*\*CSC Code = Card Security Code: Last 3 digits on signature line on back of credit card. 4 digit code on front of card for American Express.

Signature: \_\_\_\_\_

FOR INTERNAL USE ONLY:	Date Received: _____	ACT	Payment	Excel	Em
------------------------	----------------------	-----	---------	-------	----

Please return by fax 314/621-1391 or mail to:  
St. Louis Sports Commission | Attn: Karli Juenger  
308 N. 21<sup>st</sup> Street – Suite 500 | St. Louis, Missouri 63103  
For questions, please call 314/345-5111 or email [kjuenger@stlsports.org](mailto:kjuenger@stlsports.org).

[www.statefarmarchrivalry.com](http://www.statefarmarchrivalry.com)